



Missouri Interactive Telecommunication Education Networks

Sally Hackman

Network Director
shackman@centralmethodist.edu

Scott Kasmann

Technical Director
scottk@mitenetwork.org

Sheri Eaton

Resource Coordinator
sherie@mitenetwork.org

P.O. Box 64
600 West Morrison
Keller Bldg. Suite 12
Fayette, MO 65248

Phone: 660 248-1148
Fax: 660 248-2268

MIT-E North

Bunceton
Central Methodist University
Glasgow
New Franklin
Pilot Grove
Slater

MIT-E Central

Jamestown
Northwest
Otterville
Prairie Home
Sacred Heart
Smithton

MIT-E South

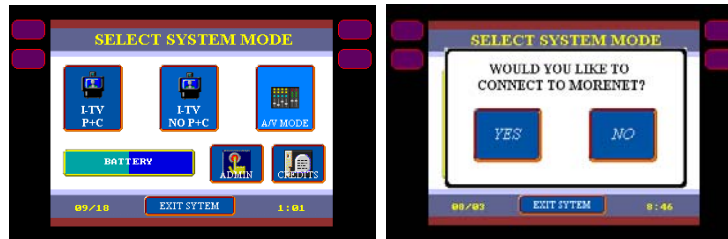
Blair Oaks
Eugene
New Bloomfield
Russellville
St. Elizabeth
Tuscumbia

www.mitenetwork.org

We will let each site know if they will be using P+C for their connections. Some second rooms and non MIT-E sites are not capable of receiving two video sources via People + Content.

In P+C mode you will be able to send the document camera or computer video to the VGA monitor at MIT-E network sites. The no P+C mode will send the document camera and computer video through the same signal as the instructor and student cameras. When not using People + Content the buttons for the document camera and computer will appear next to the other video choices.

1. Activate the touch panel and select either the I-TV P+C or I-TV no P+C button. After either choice you will be asked "Would you like to connect to MOREnet?" Select "Yes"



2. Once you select "Yes," the camera control options will appear and class may begin.
3. At the end of EVERY I-TV CLASS, each site will need to disconnect from their conference to reset the system for the next I-TV class. Select "Exit" from the options on screen and you will get the following popup menu:



4. Select "Yes" and the touchpad will reset to the system mode screen for the next class period.

This is a very important change in the way we will be connecting for classes. If you have any questions, please call the MIT-E Office.